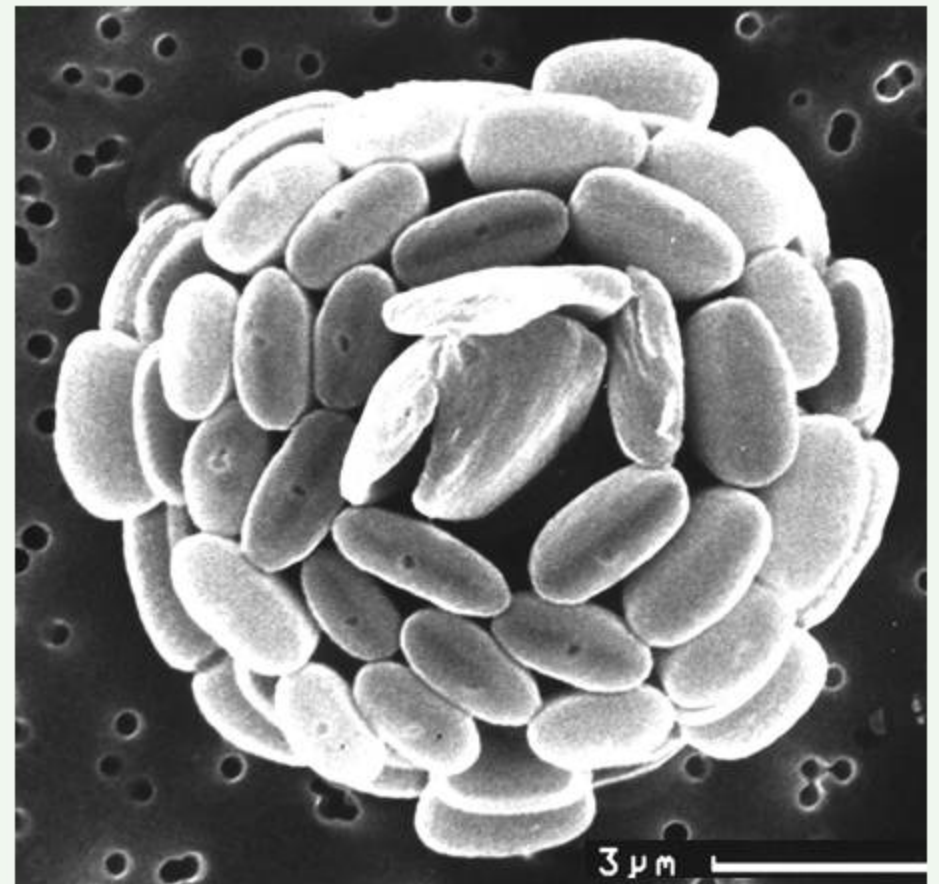
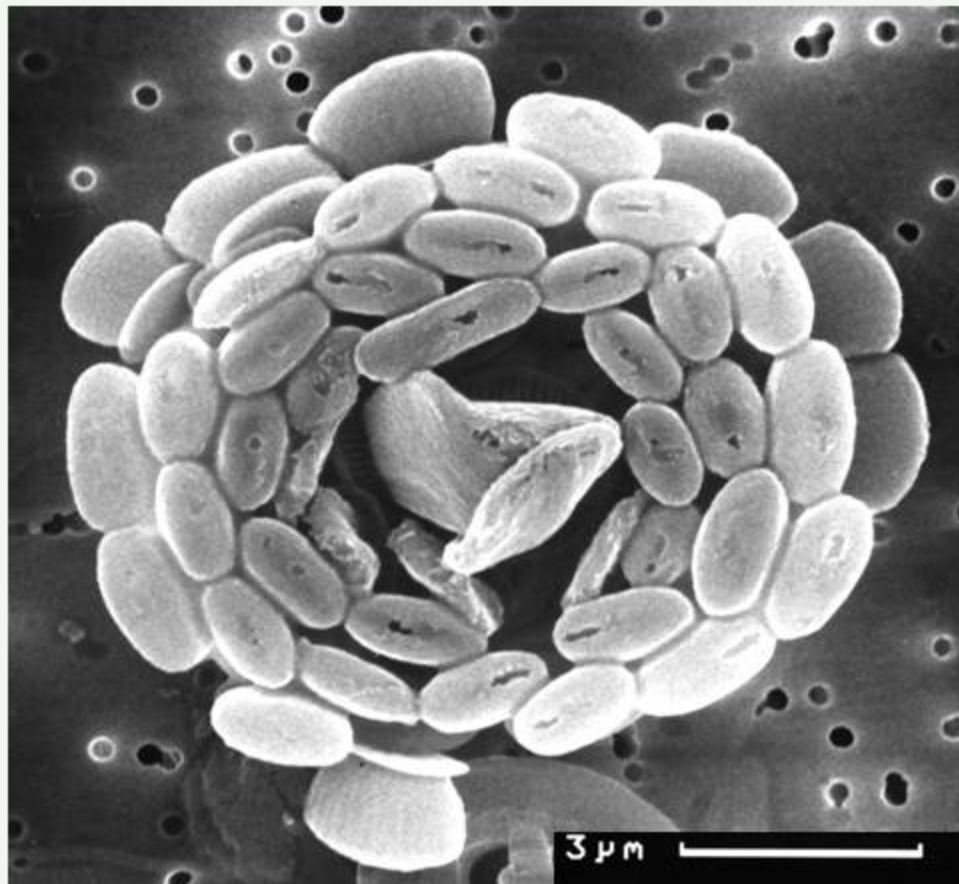
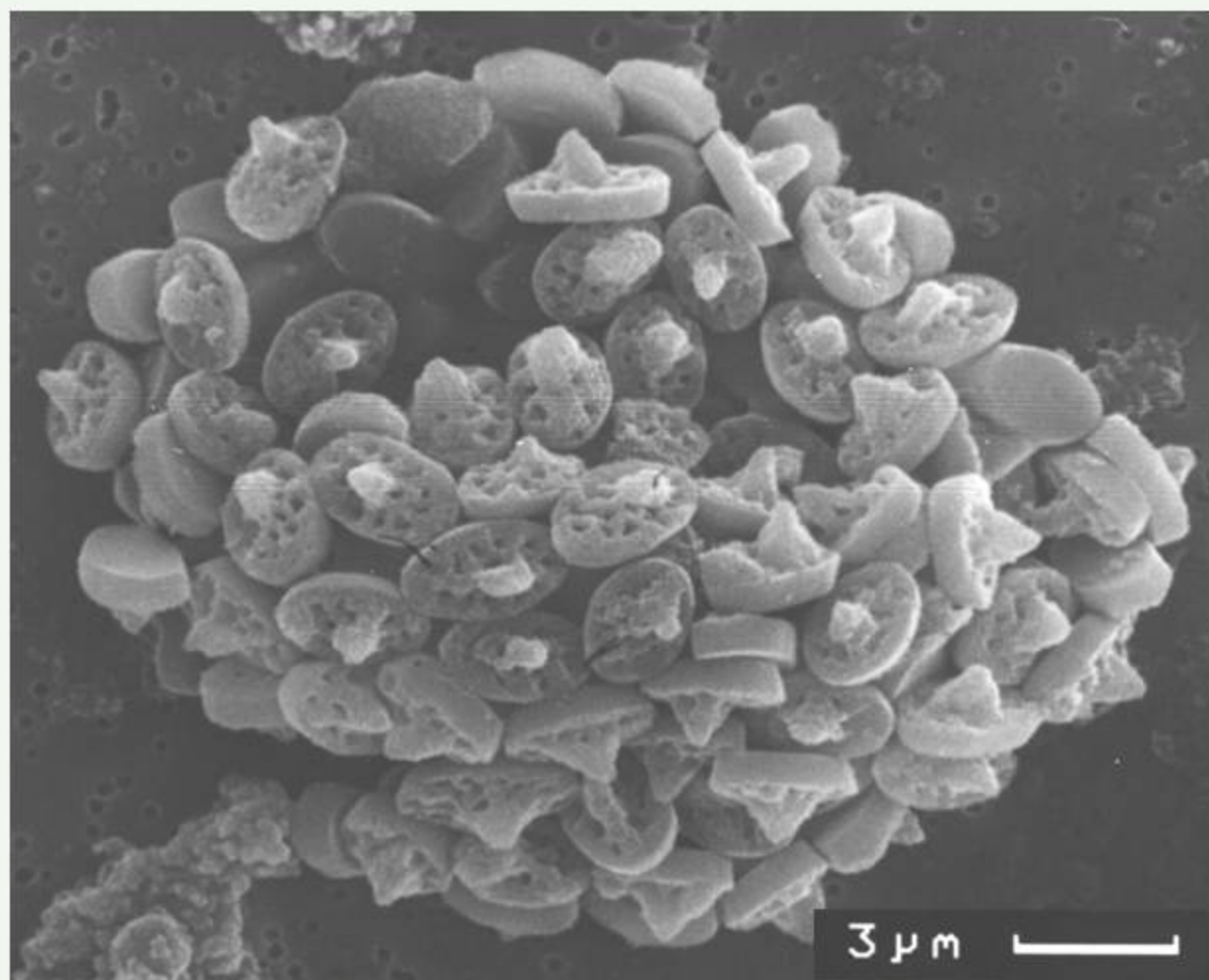


phytoplankton - prymnesiophyceae - coccolithophorales
Algirosphaera robusta



REM (Indian Ocean)

phytoplankton - prasinophyceae - coccolithophorales
Calyptrolithina multipora



REM (Indian Ocean)

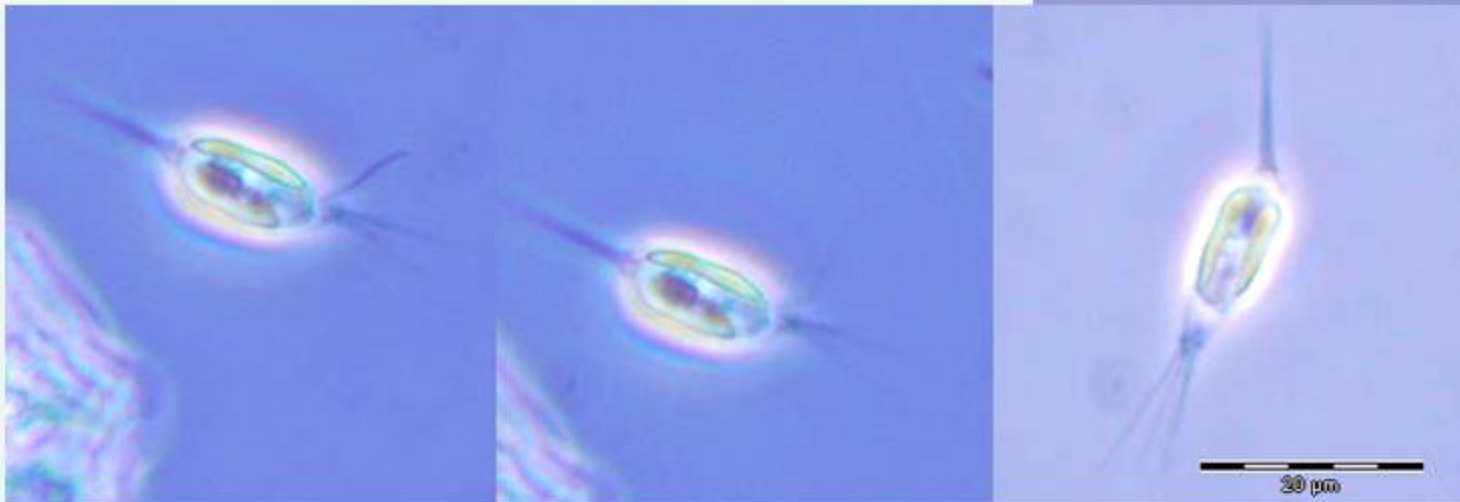
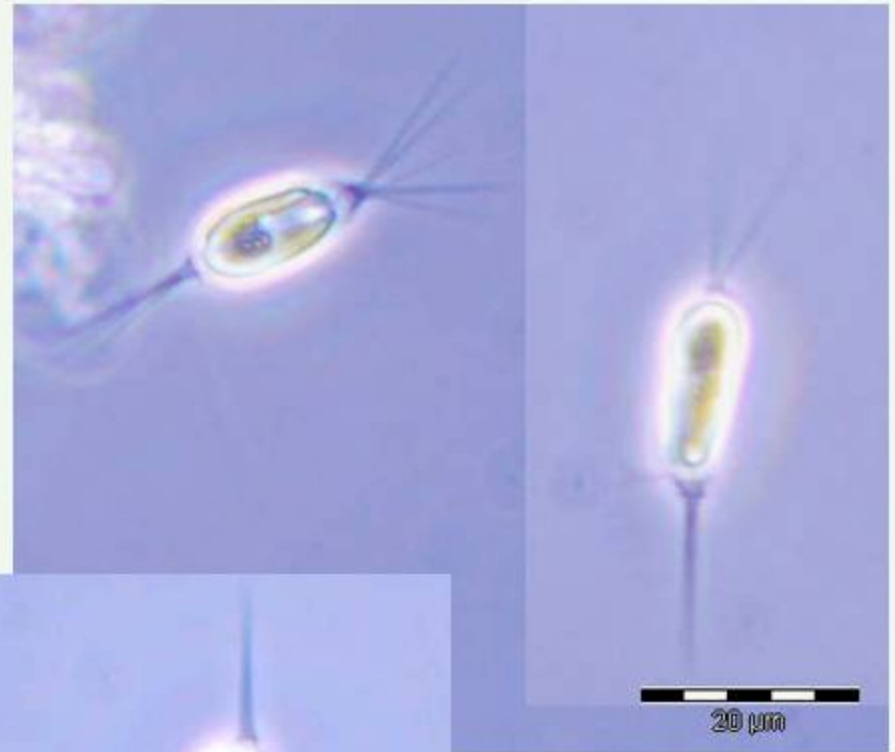
phytoplankton - prinnesiophyceae

Chrysochromulina sp.

abundance: spring, summer

life-form: solitary

length: 12 - 16 μm

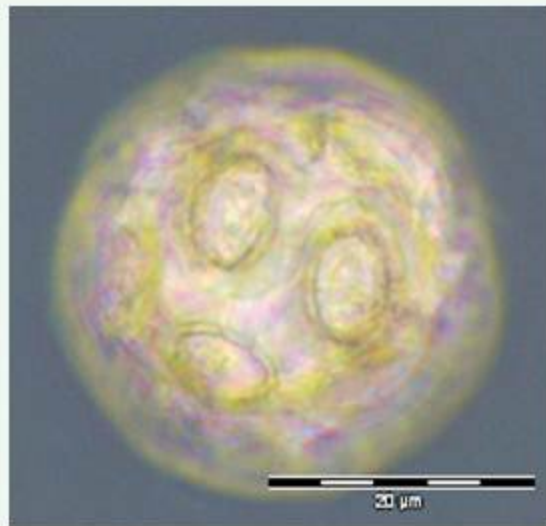


LM (coastal station Heiligendamm)

phytoplankton - primnesiophyceae -coccolithophorales

Coccolithus pelagicus spp. braarudii

abundance: summer, autumn
life-form: solitary
diameter cell: up to 32µm



LM Formol-fixed cell



REM

North Sea (NSB3, NGW8, UFSDB)

phytoplankton - primnesiophyceae - coccolithophorales

Coronosphaera mediterranea

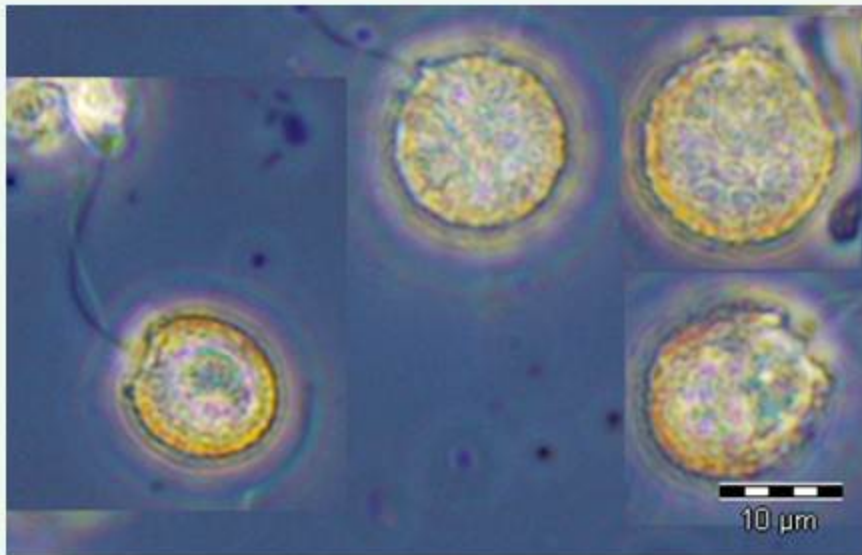
abundance: summer, autumn

life-form: solitary

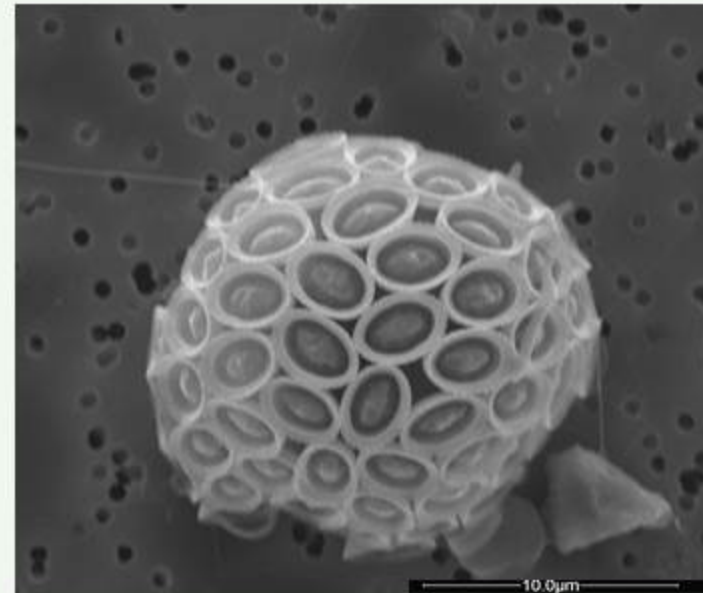
diameter:

cell including coccoliths: 12-20 μ m

size coccoliths: 3 - 4 μ m



LM, Formol-fixed cells
(North Sea, DTEND)



REM (North Sea, DTEND)

phytoplankton – primnesiophyceae - isochrysidales

Emiliana huxleyi

life-form: solitary
diameter: 5 - 10µm



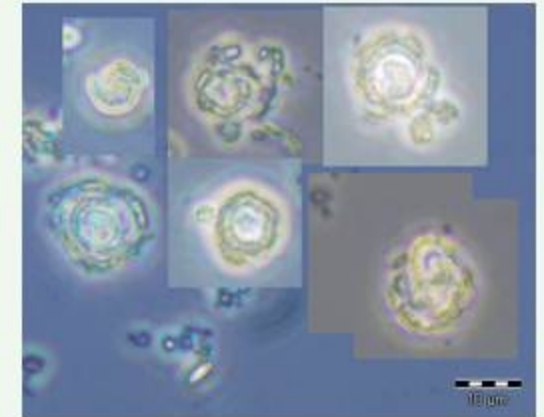
REM (Indian Ocean)



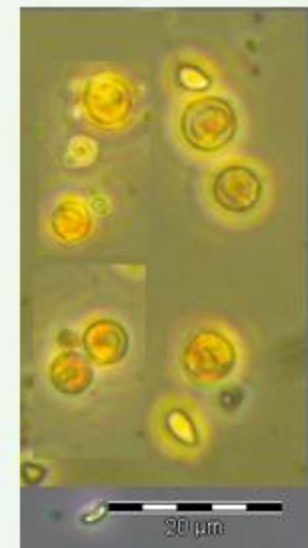
REM (Black Sea)



REM (North Sea: URST3, ES1)

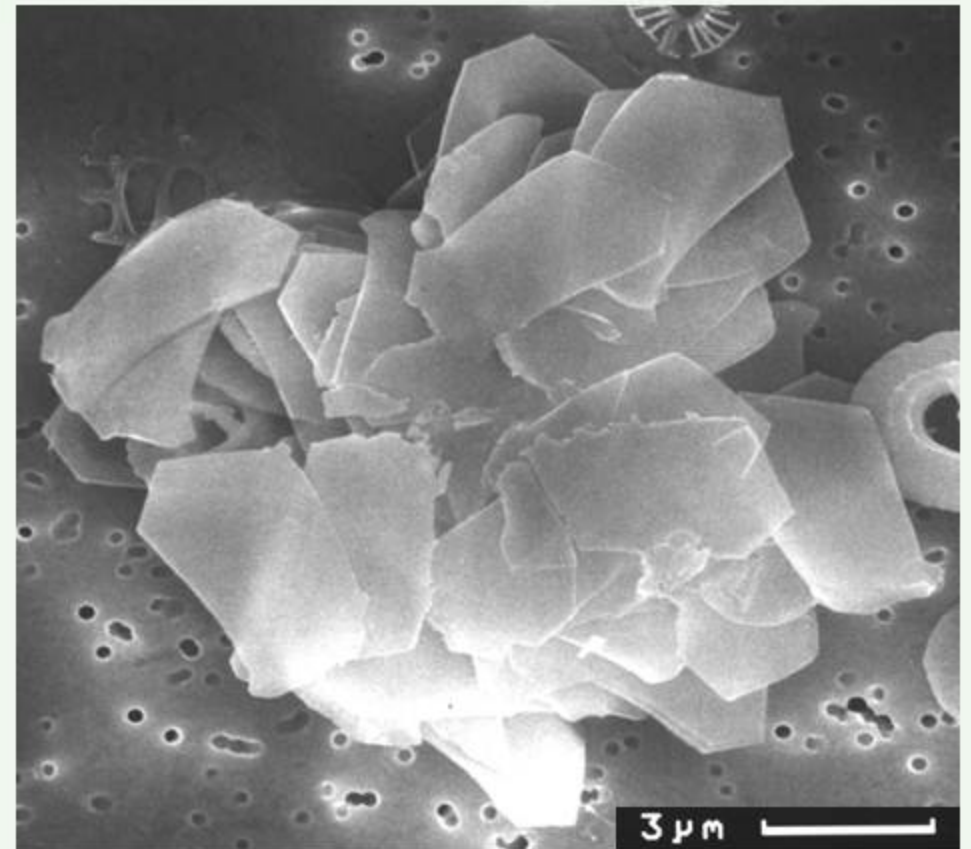
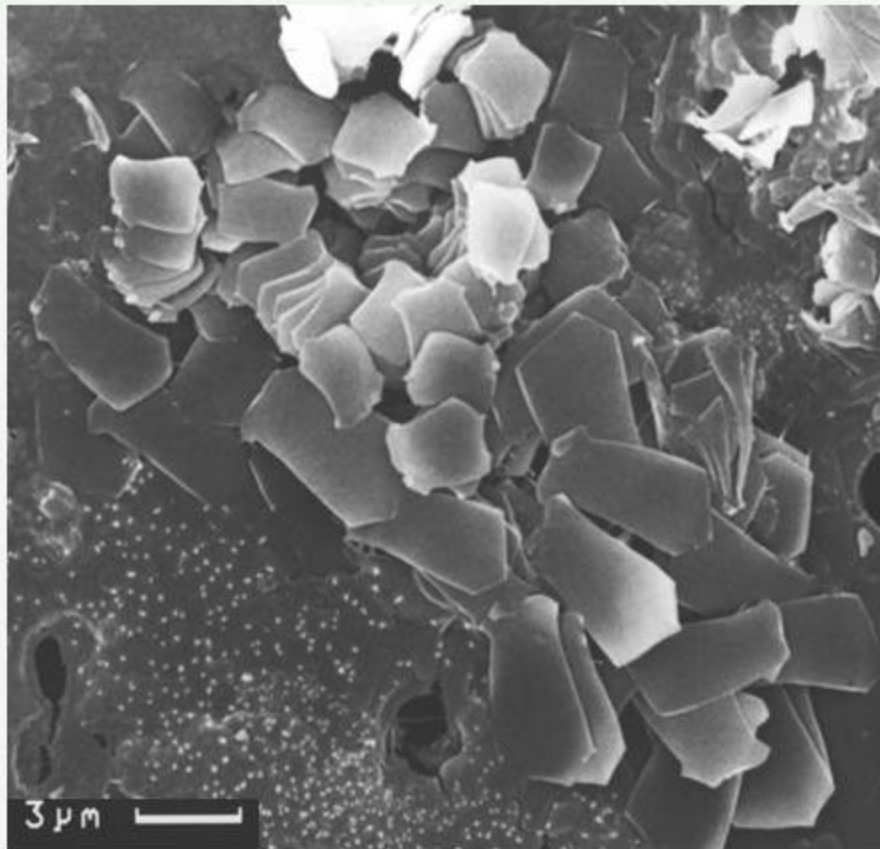


LM, Formol-preserved cells



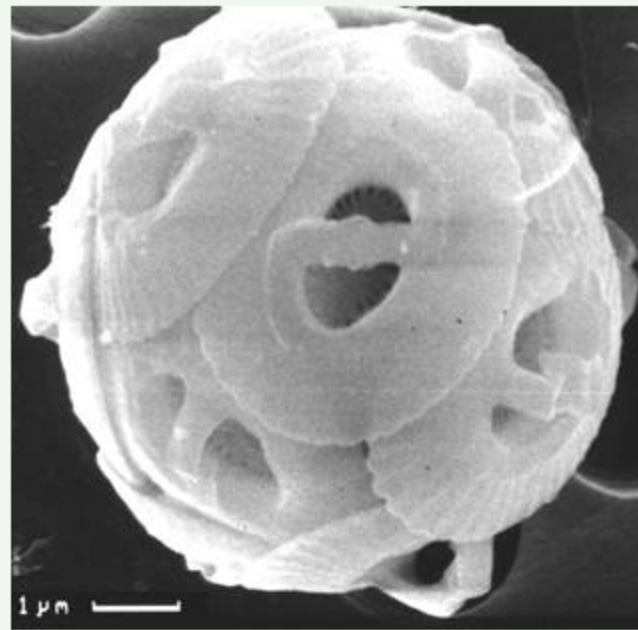
LM, Lugol-preserved cells

phytoplankton - primnesiophyceae - coccolithophorales
Florisphaera profunda

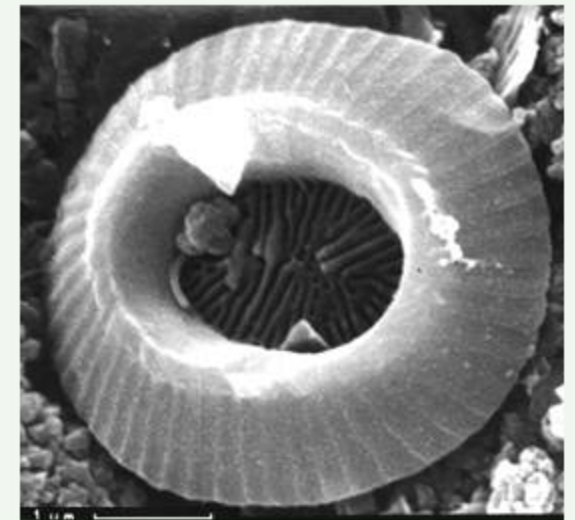
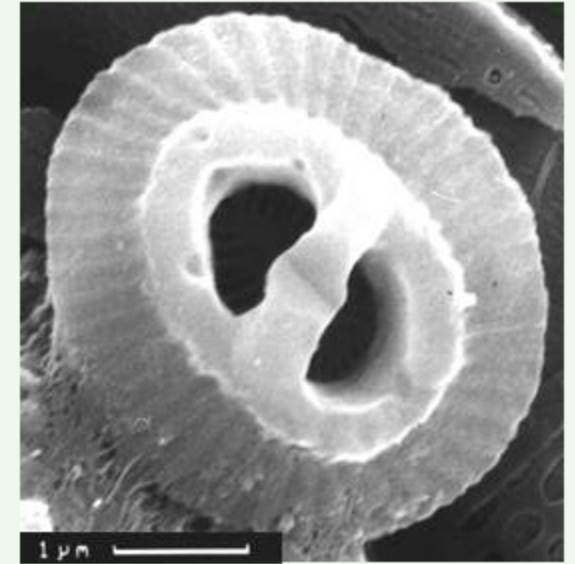


REM (Indian Ocean)

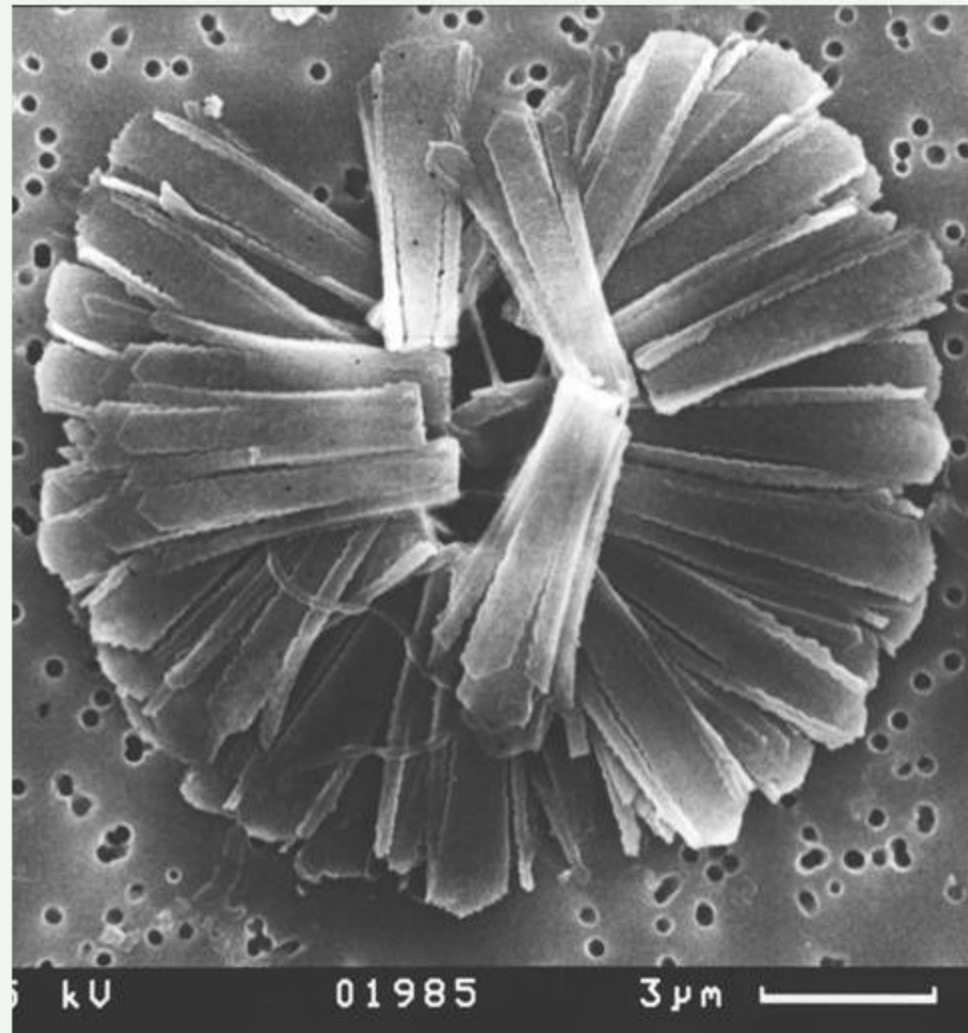
phytoplankton - prymnesiophyceae - isochrysidales
Gephyrocapsa oceanica



REM (Indian Ocean)



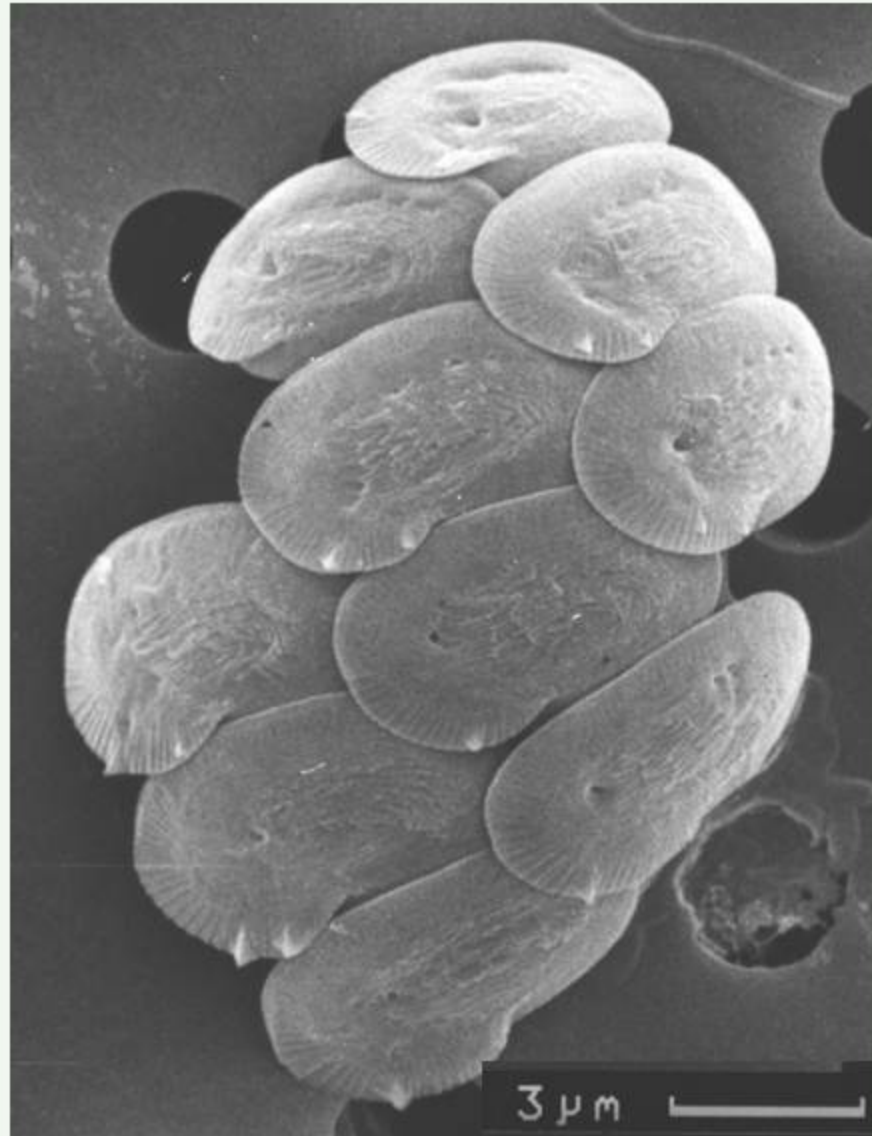
phytoplankton – prymnesiophyceae - coccolithophorales
Gladiolithus flabellatus



REM (Indian Ocean)

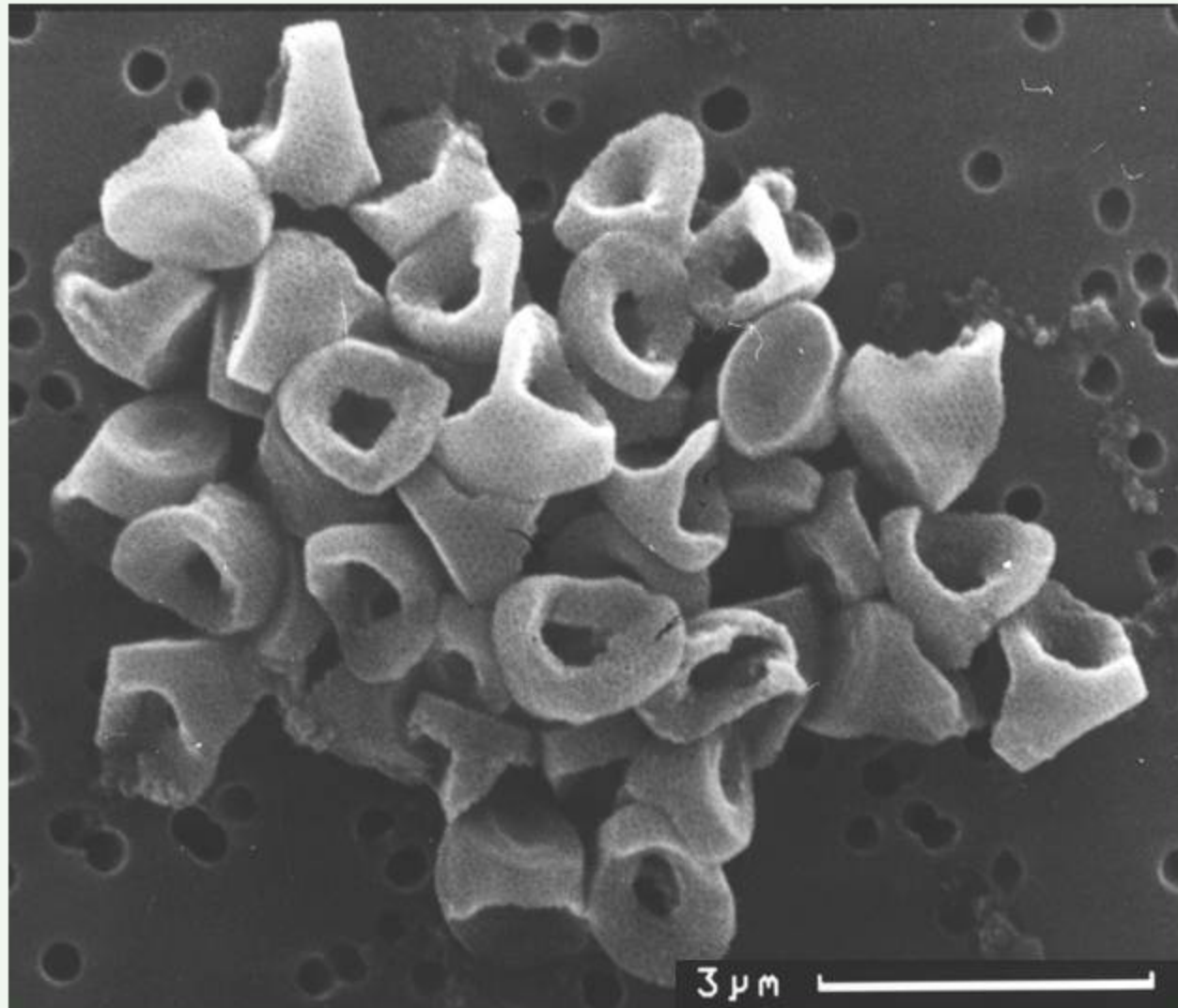
phytoplankton – primnesiophyceae – coccolithophorales

Helicosphaera hyalina



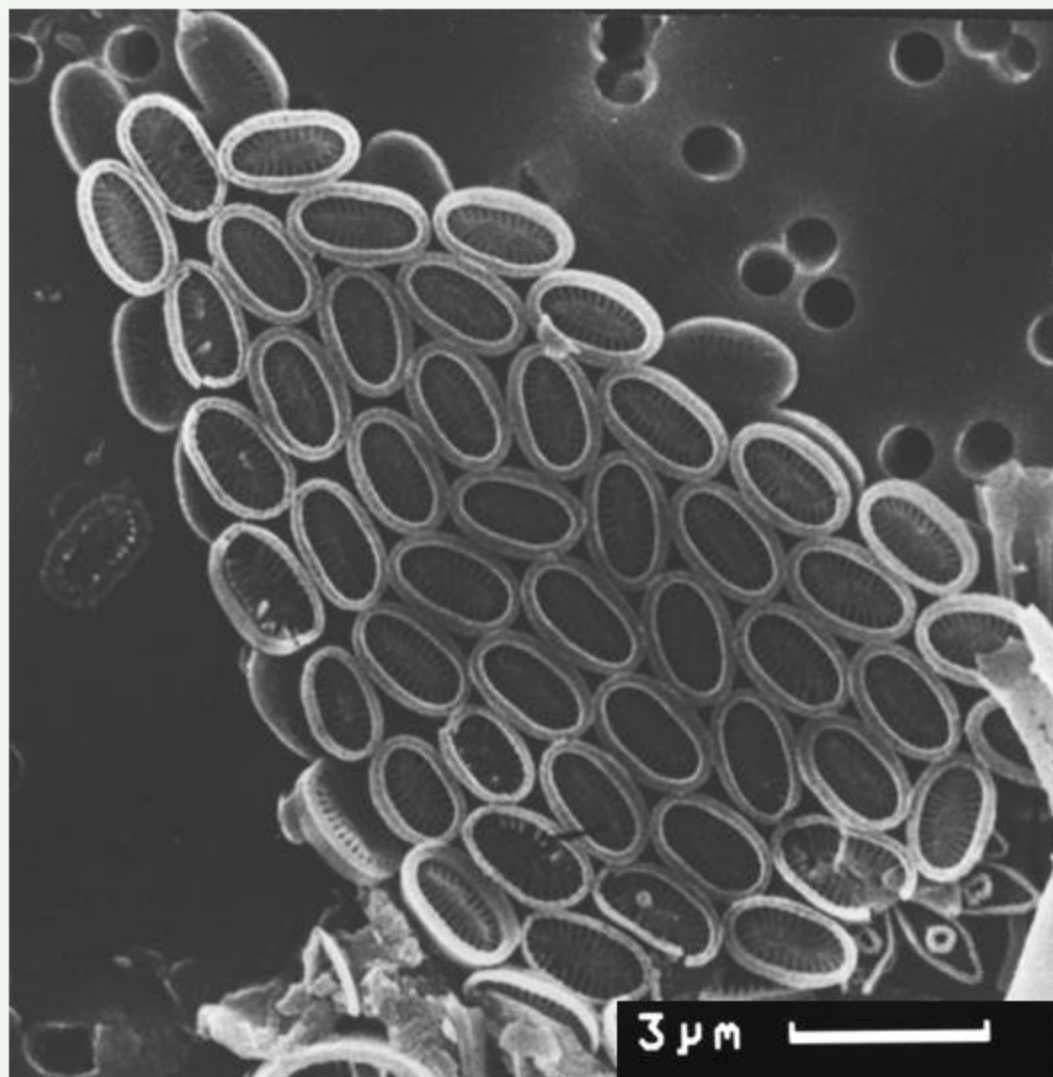
REM (Indian Ocean)

phytoplankton - prymnesiophyceae - coccolithophorales
Homozygosphaera



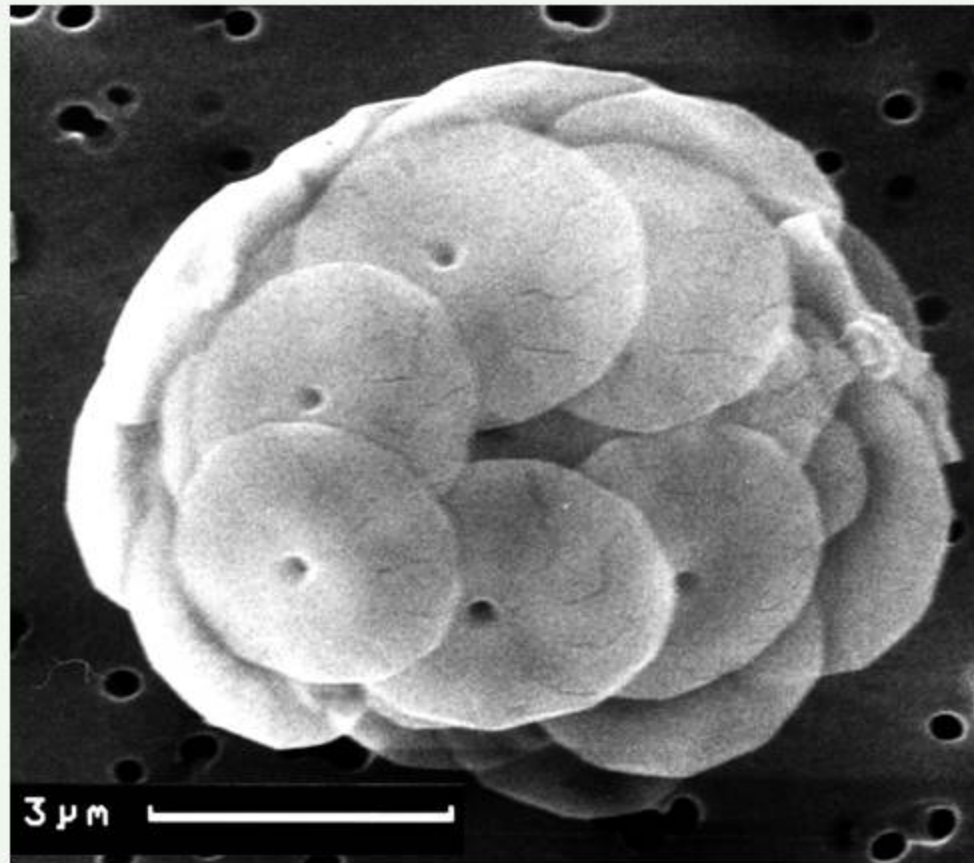
REM (Indian Ocean)

phytoplankton - primnesiophyceae - coccolithophorales
Michaelsarsia



REM (Indian Ocean)

phytoplankton - primnesiophyceae - coccolithophorales
Oolithotus

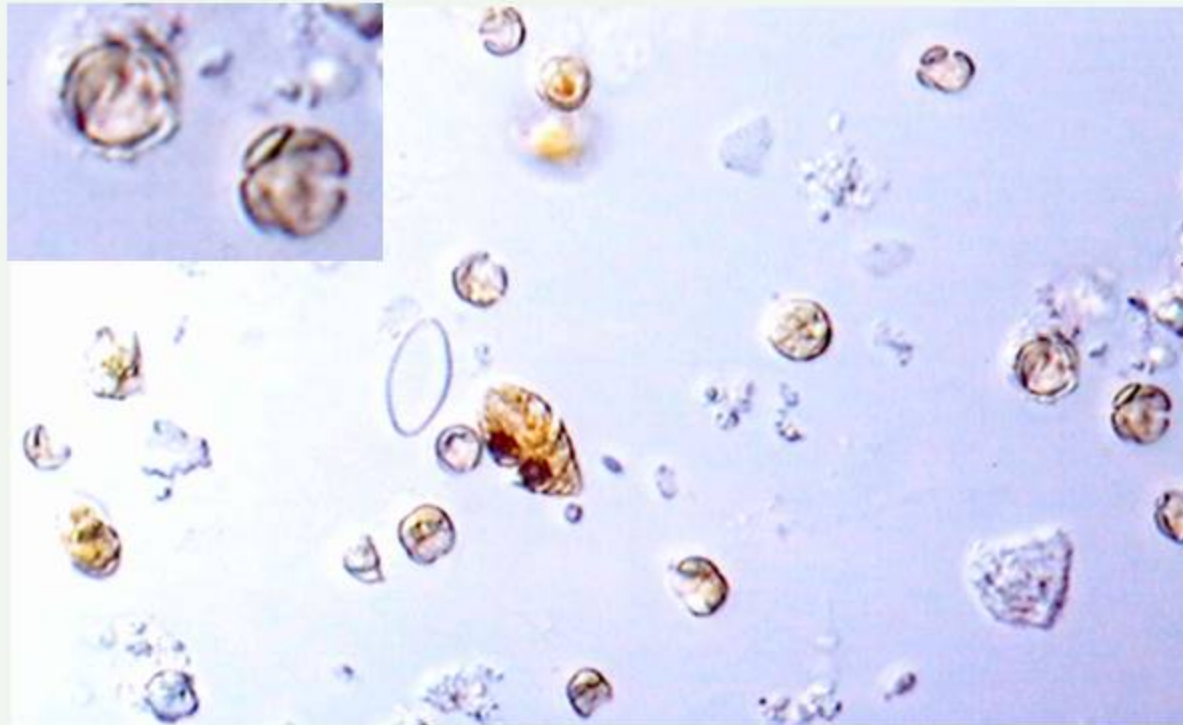


REM (Indian Ocean)

phytoplankton - prymnesiophyceae

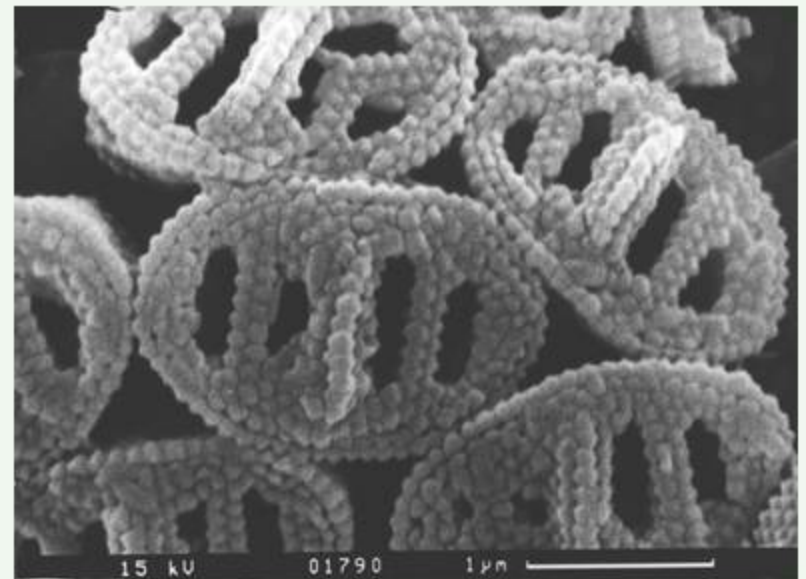
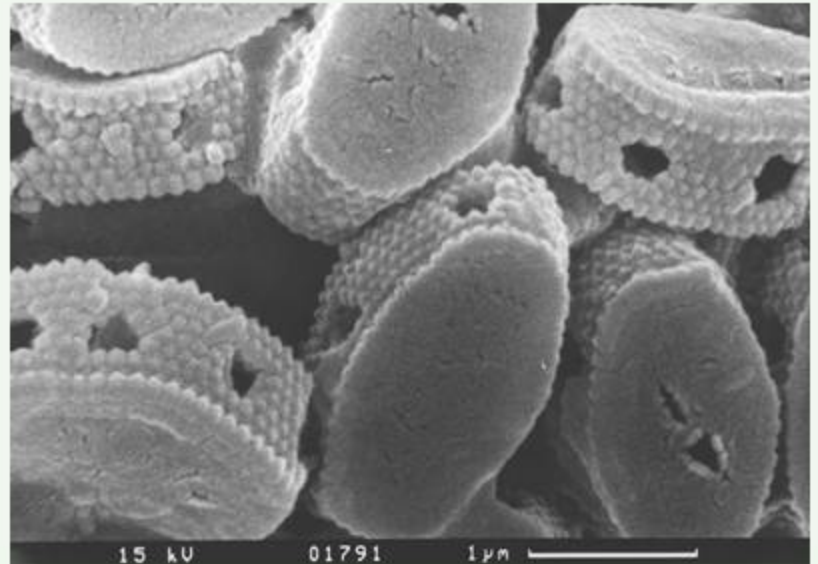
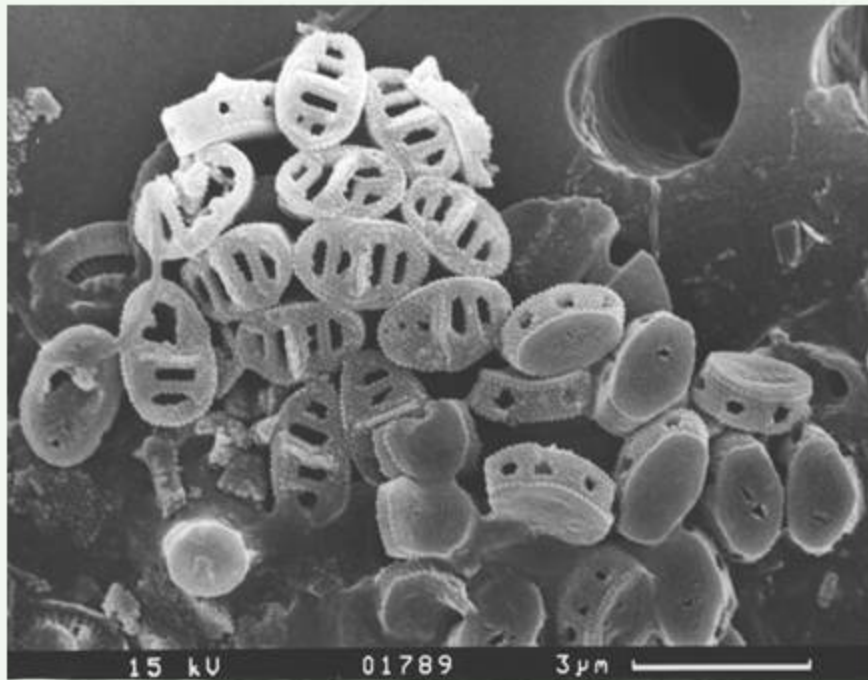
Phaeocystis sp.

abundance: spring, late autumn
life-form: colonies
cell diameter: 4 - 8 μm



LM (coastal station Heiligendamm)

phytoplankton - prasinophyceae - coccolithophorales
Poricalyptra

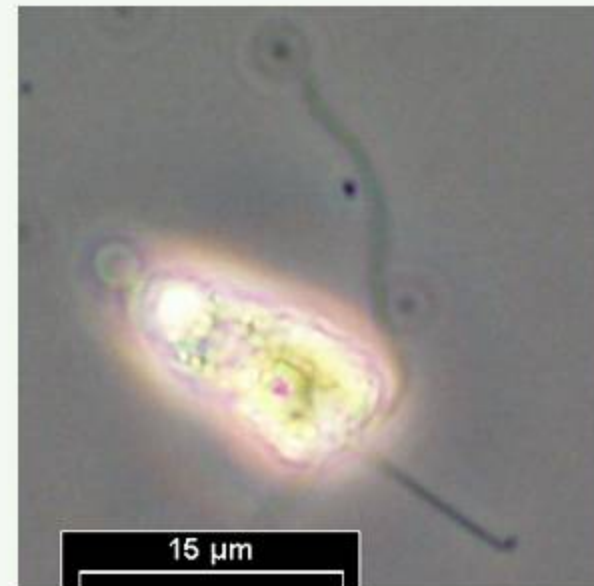


REM (Indian Ocean)

phytoplankton - prymnesiophyceae

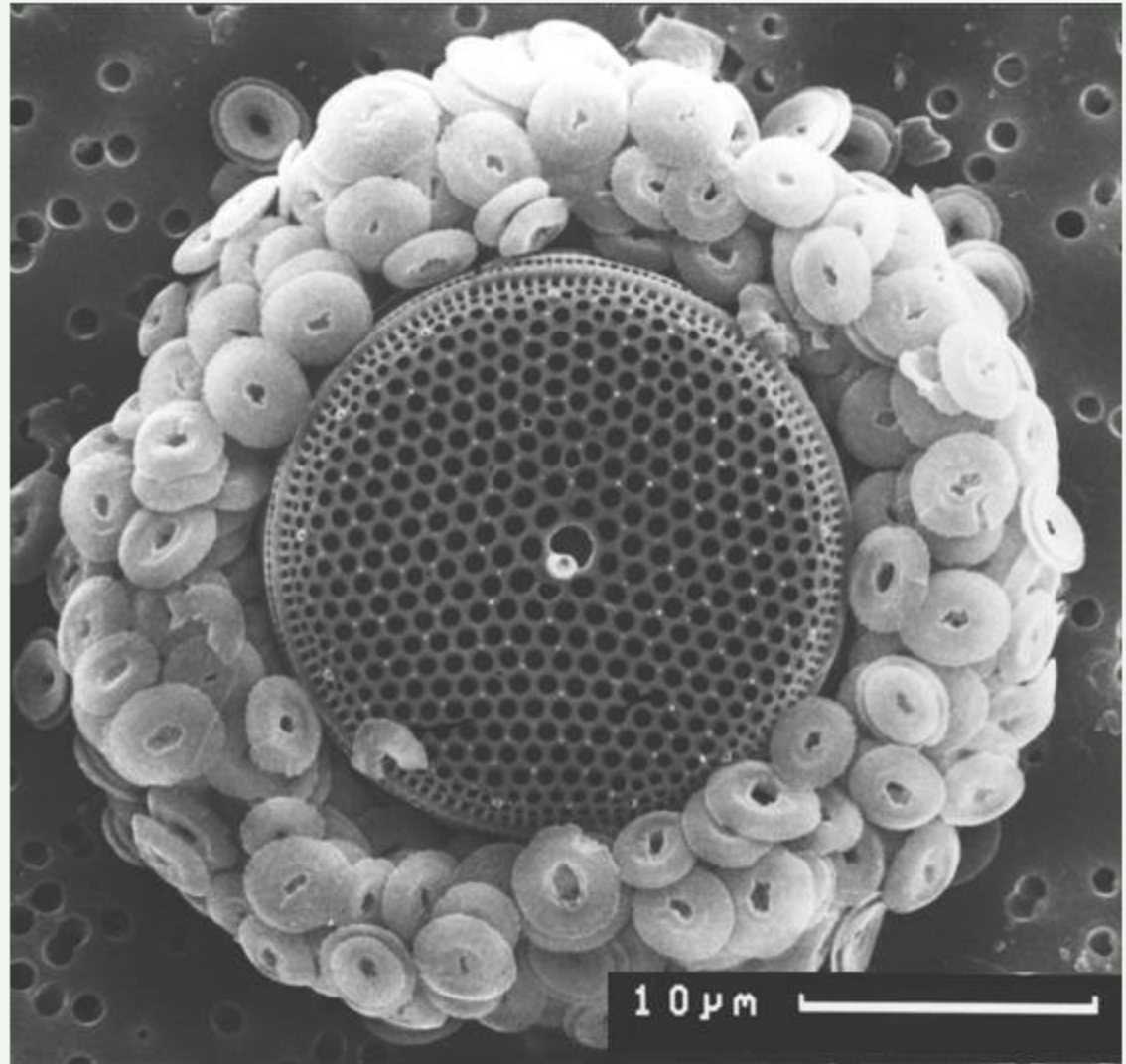
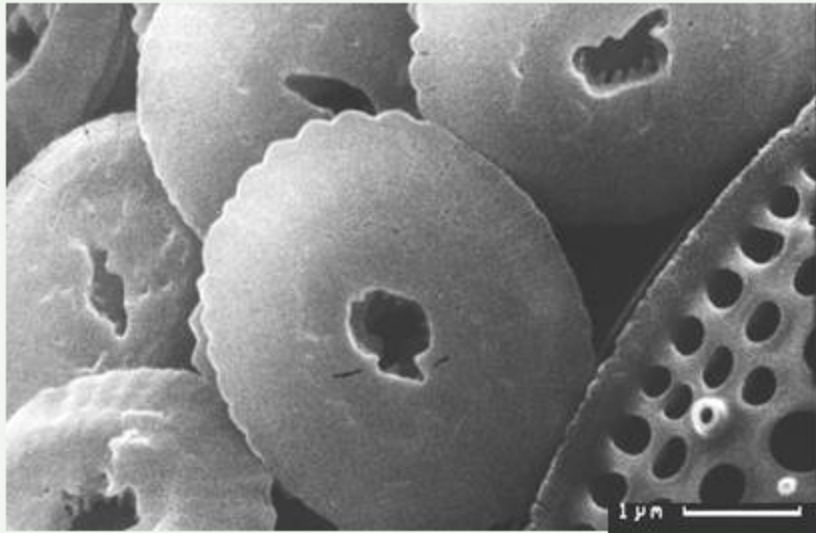
Prymnesium sp.

abundance: spring, summer
life-form: solitary
length: 10-15 μ m



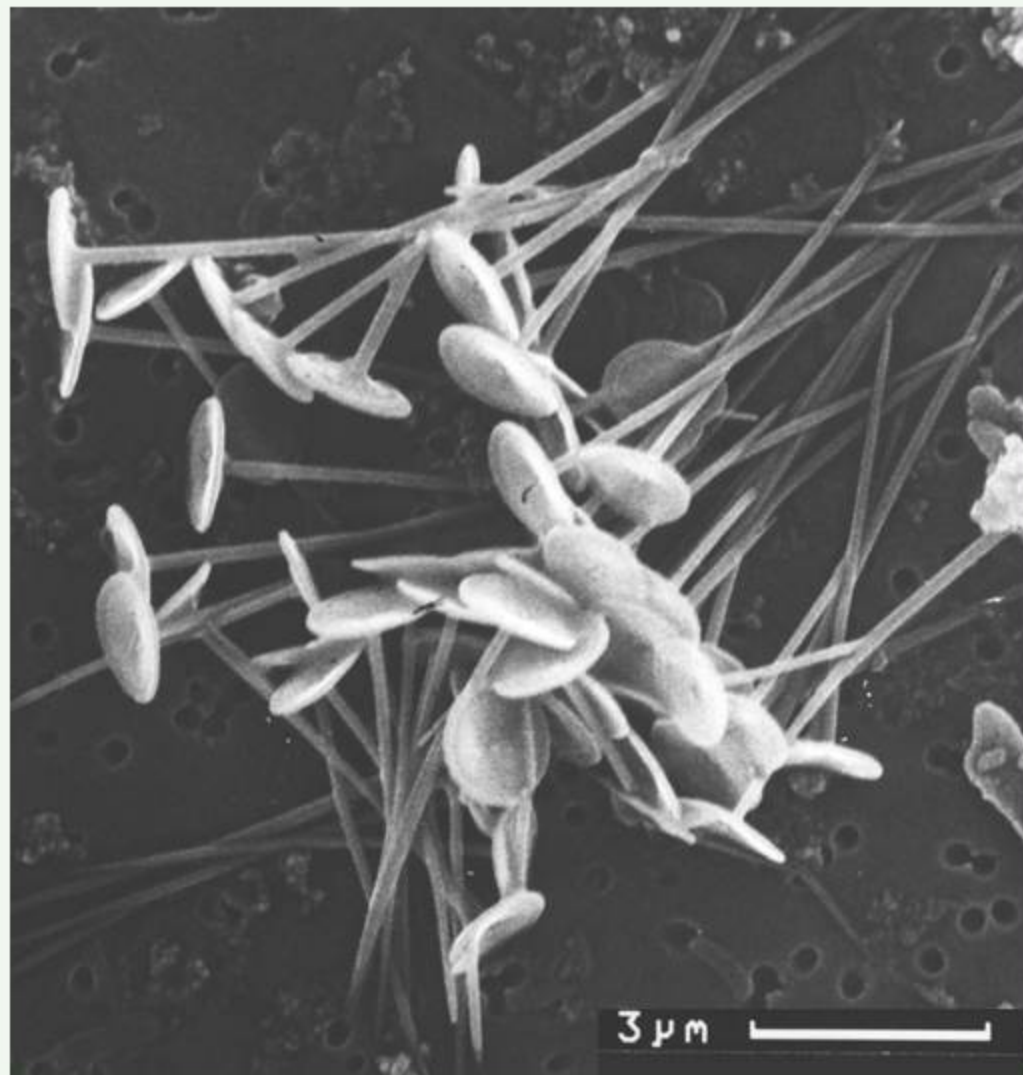
LM (coastal station Heiligendamm)

phytoplankton - prymnesiophyceae - isochrysidales
Reticulofenestra sessilis



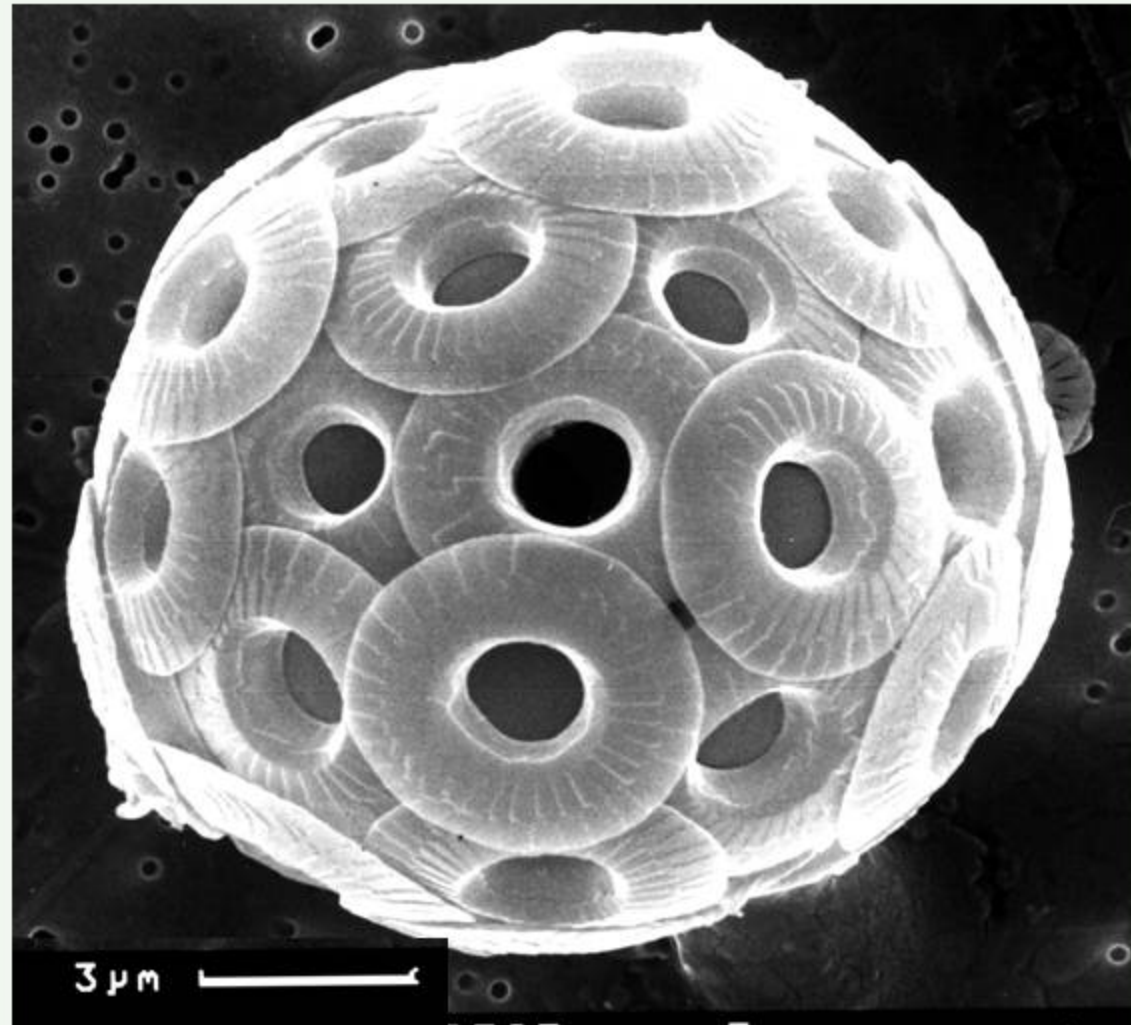
REM (Indian Ocean)

phytoplankton - primnesiophyceae - coccolithophorales
Rhabdosphaera



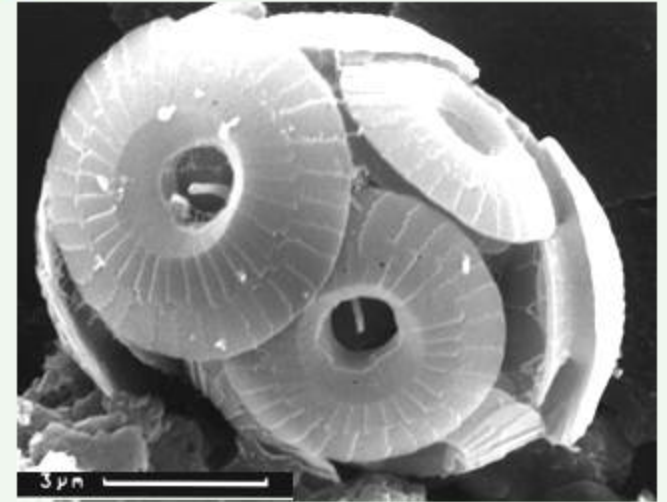
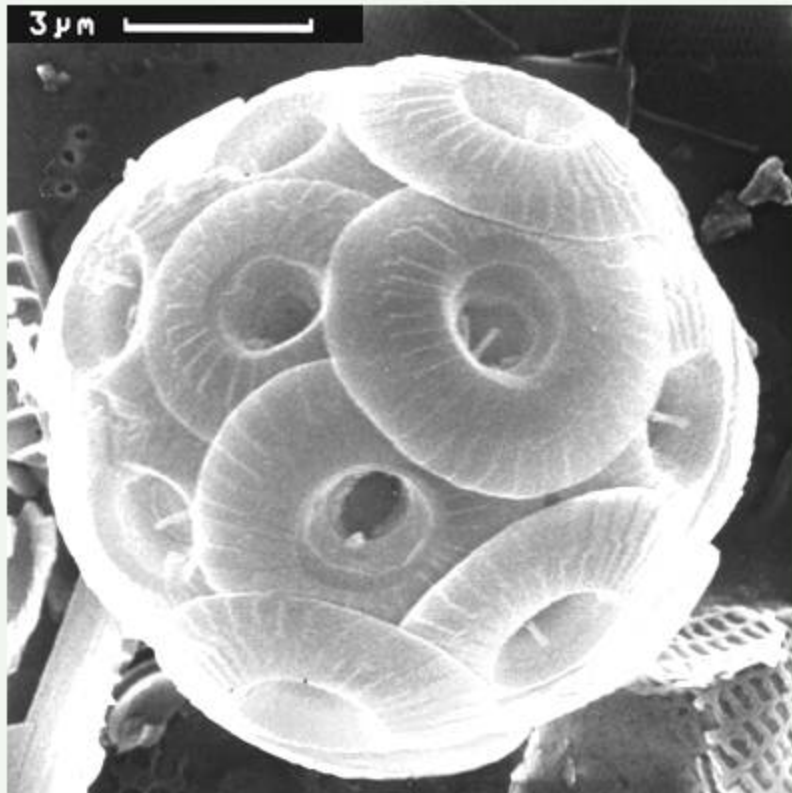
REM (Indian Ocean)

phytoplankton - primnesiophyceae - coccolithophorales
Umbilicosphaera sibogae



REM (Indian Ocean)

phytoplankton - prymnesiophyceae - coccolithophorales
Umbilicosphaera sibogae var. *foliosa*



REM (Indian Ocean)